

THE SENSOR CONNECTION

Temperature Sensing Solutions



www.thesensorconnection.com

EGT PROBES

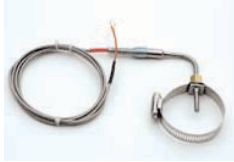
EGT RACING PROBES / SENSORS *Fast Response*

.187 Diameter Probes

EGT Muffler
Clamp Probe

Features:

Exposed Tip Sensing Junction (Fastest Response Time) Includes adjustable Muffler Clamp mounting hardware



Specifications:

Type K Thermocouple • 0°F to 2200°F range (-17°C to 1200°C) • Special Limits of Error (+/- 0.4% of reading) • Inconel 600 sheathing for longevity at high temperatures • Stainless steel over-braid • Teflon™ insulated conductors • Response time: 500 milliseconds
• Made in the USA

Exhaust Probe w/
Compression
Fitting

Features:

Exposed Tip Sensing Junction (Fastest Response Time) Includes adjustable Compression Fitting mounting hardware



Specifications:

Type K Thermocouple • 0°F to 2200°F range (-17°C to 1200°C) • Special Limits of Error (+/- 0.4% of reading) • Inconel 600 sheathing for longevity at high temperatures • Stainless steel over-braid • Teflon™ insulated conductors • Response time: 500 milliseconds
• Made in the USA

EGT Diesel
Probe

Features:

Enclosed Tip Sensing Junction (Foul-Proof)



Specifications:

Type K Thermocouple • 0°F to 2200°F range (-17°C to 1200°C) • Special Limits of Error (+/- 0.4% of reading) • Inconel 600 sheathing for longevity at high temperatures • Stainless steel over-braid • Teflon™ insulated conductors • Response time: 1500 milliseconds • Made in the USA

SEVERE DUTY EGT PROBES / SENSORS *Fast Response*

.250 Diameter Probes

Individual
Harness Probes
Severe Duty

Features:

Exposed Tip Sensing Junction (Fastest Response Time) Includes adjustable Compression Fitting mounting hardware



Specifications:

Type K Thermocouple • 0°F to 2200°F range (-17°C to 1200°C) • Special Limits of Error (+/- 0.4% of reading) • Inconel 600 sheathing for longevity at high temperatures • Stainless steel over-braid • Teflon™ insulated conductors • Response time: 750 milliseconds
• Made in the USA

Exhaust
Temperature
Sensor Harness
8 probes

Features:

8 probes in two complete harnesses Exposed Tip Sensing Junction (Fastest Response Time) Includes adjustable Compression Fitting mounting hardware



Specifications:

Type K Thermocouple • 0°F to 2200°F range (-17°C to 1200°C) • Special Limits of Error (+/- 0.4% of reading) • Inconel 600 sheathing for longevity at high temperatures • Stainless steel over-braid • Teflon™ insulated conductors • Response time: 750 milliseconds
• Made in the USA

Thermocouples and RTDs

Cylinder Head
Temperature
Probe (CHT)



The Cylinder Head Temperature Sensor (CHT Sensor) Survives high vibration and temperatures up to 600 degrees F (315 degrees C). The sensor will fit most 14 mm spark plugs with a cable lead length of 6 feet (2 meters). Installs easily between the cylinder head and spark plug hex.

Specifications:

Type K Thermocouple • Special Limits of Error (+/- 0.4% of reading) • 0 Deg F to 600 Deg F • Range (-17 Deg C to 315 Deg C) • Stainless steel over-braid • Teflon™ insulated conductors • Response time:1500 milliseconds • 14 mm ID • Made in the USA

Surface Mount
Fast Response
Thermocouple
Sensor



This revolutionary new self-sticking stick on probe has been engineered to perform in higher temperature thermocouple applications up to 750 Degrees F.

The small size and quick response time will make these a real favorite around the lab and the track. They apply easily and give an accurate reading up to 750 Degrees F. Use for critical temperature measurements.

Made in the USA

Blade Probe



Features:

Exposed Tip Junction (Faster Response Time) Superior Inconel Sheathing longevity at high temperatures 2200 Deg F (1200 Deg C)

Specifications:

Type K • Special Limits of Error +/- 0.4% of reading • Inconel 600 sheathing • Response time: 500 milliseconds • Made in the USA

"Super Lite"™
Series Digital
Meter Pyrometer
Amplifier



Features:

- Accepts type K thermocouple probe
- Visible high temperature alarm LED
- °F/°C selectable
- Screw terminal connection
- Small Size 1" X 2"
- Analog retransmission output (to data logger)
- HI alarm relay & front panel light
- Peak temperature display hold

Custom Temperature Sensors

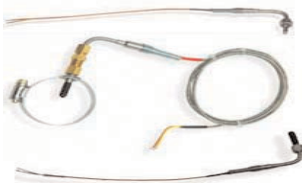
EGT Probes Thermocouples RTDs

We specialize in custom sensing solutions...

We manufacture for many industries including racing, R&D and Test labs, special processes and OEM. We can produce custom RTDs Thermocouples and thermistors to your specifications. We specialize in extreme environment applications.

Applications:

- Marine • Agriculture • Military • Power Generation • Diesel • Engine Management Systems • Racing • R&D • Testing • OEM



TSC Sensors - EGT Exhaust Temperature Probe - 90 Degree

Fast Response EGT Temperature Probe

- Type K thermocouple probe
- Exposed sensing junction for fastest response
- Includes 316 SS adjustable compression fitting
- Stainless steel protected wires
- Designed for engine test & racing environments



Specifications

Thermocouple type: K
 Range: -148 to 2372°F (-100 to 1300°C)
 Accuracy: +/-0.4% of reading or about +/- 1.1°C (Special Limits of Error)

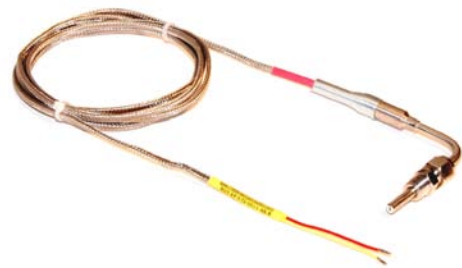
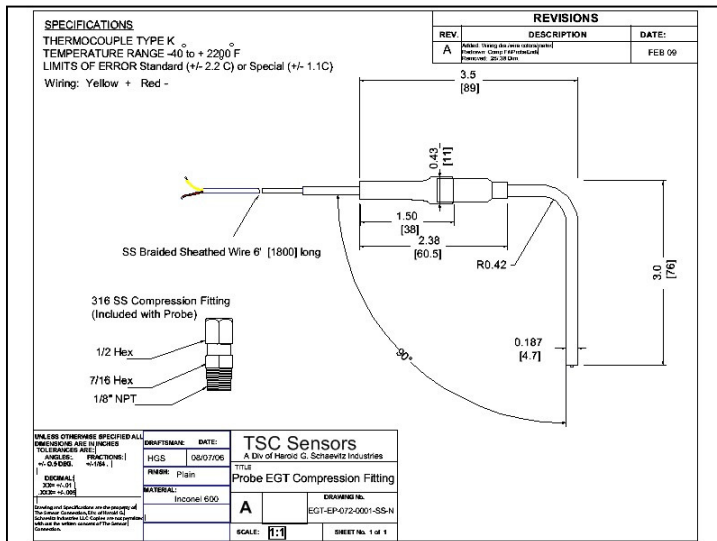
Probe diameter: 3/16 inch (0.187 inch) (4.75 mm)
 Sensing Junction: Exposed, Ungrounded
 Response Time: 200 mS
 Time Constant: 200 mS (Defined as the time required to reach 63.2% of an instantaneous temperature change)

Outer Sheath Material: Inconel, melting point 2550°F (1400°C)

Cable: 6 foot (2 meter), stainless steel overbraiding over Teflon™ insulated, stranded wires

Compression Fitting: 316 stainless steel, adjustable, 1/8 inch NPT male thread

Wiring: + = Yellow - = Red



Ordering Information

EGT-EP-072-0001-SS-N The Exposed Series 90 Degree EGT Probe

Accessories

- BNG-AD-000-0000-18-0 Weld-On Bung Adapter, Female 1/8 NPT
- BNG-WO-000-0187-18-0 Spare Compression Fitting, 0.187 thru-hole
- MCT-MP-600-0000-00-K Male Mini-Spade Connector



The Sensor Connection

675 East Big Beaver Road, Suite 111
 Troy, MI 48083
 Phone: 248-417-2622
 Fax: 248-526-7001
 Email: Sales@TheSensorConnection.com
 Web: TheSensorConnection.com



TSC Sensors - EGT Exhaust Temperature Probe - Muffler Clamp

Fast Response EGT Temperature Probe

- Type K thermocouple probe
- Exposed sensing junction for fastest response
- Includes 316 SS adjustable compression fitting
- Stainless steel protected wires
- Designed for engine test & racing environments



Specifications

Thermocouple type: K
 Range: -148 to 2372°F (-100 to 1300°C)
 Accuracy: +/-0.4% of reading or about +/- 1.1°C (Special Limits of Error)

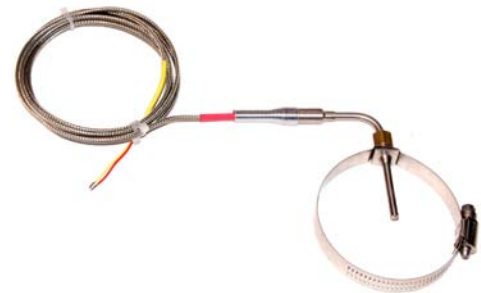
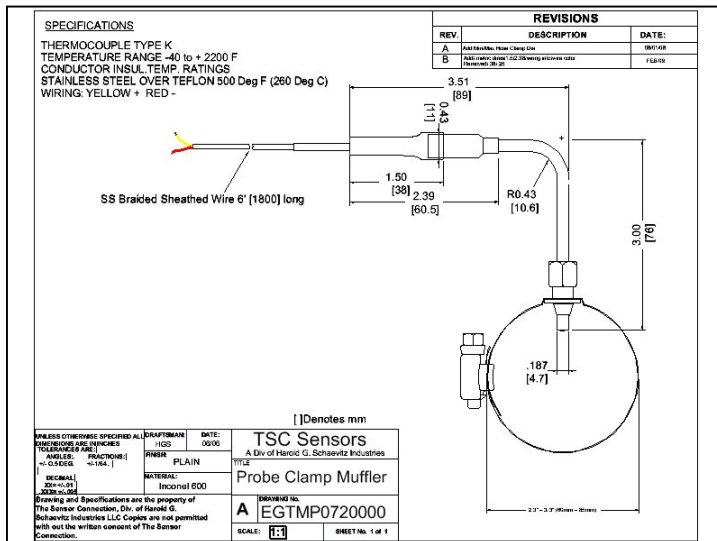
Probe diameter: 3/16 inch (0.187 inch) (4.75 mm)
 Sensing Junction: Exposed, Ungrounded
 Response Time: 200 mS
 Time Constant: 200 mS (Defined as the time required to reach 63.2% of an instantaneous temperature change)

Outer Sheath Material: Inconel, melting point 2550°F (1400°C)

Cable: 6 foot (2 meter), stainless steel overbraiding over Teflon™ insulated, stranded wires

Muffler Clamp Fitting: Steel, adjustable from 1.5 ~ 2.5 inch (38 ~ 63 mm)

Wiring: + = Yellow - = Red



Ordering Information

EGT-MP-072-0000-SS-N The Exposed Series 90 Degree EGT Probe with Muffler Clamp

Accessories

SPARE-MflierClmp-2.5 Spare Clamp Fitting, 1.5 inch to 2.5 inch
 SPARE-MflierClmp-3.2 Spare Clamp Fitting, 2.3 inch to 3.2 inch
 MCT-MP-600-0000-00-K Male Mini-Spade Connector



The Sensor Connection

675 East Big Beaver Road, Suite 111
 Troy, MI 48083
 Phone: 248-417-2622
 Fax: 248-526-7001
 Email: Sales@TheSensorConnection.com
 Web TheSensorConnection.com



TSC Sensors - Diesel Exhaust Temperature Probe - 90 Degree

Fast Response EGT Temperature Probe

- Type K thermocouple probe
- Enclosed sensing junction for maximum longevity
- Includes 316 SS adjustable compression fitting
- Stainless steel protected wires
- Designed for engine test & racing environments



Specifications

Thermocouple type: K
 Range: -148 to 2372°F (-100 to 1300°C)
 Accuracy: +/-0.4% of reading or about +/- 1.1°C (Special Limits of Error)

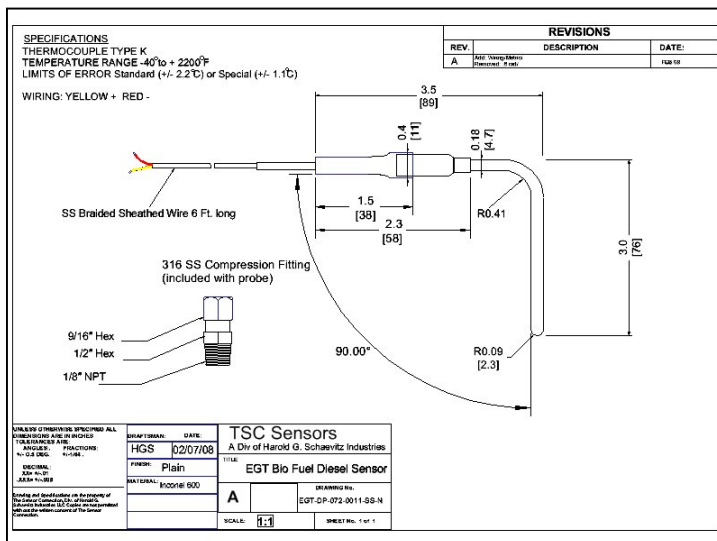
Probe diameter: 3/16 inch (0.187 inch) (4.75 mm)
 Sensing Junction: Enclosed, Ungrounded
 Response Time: 300 mS
 Time Constant: 1200 mS (Defined as the time required to reach 63.2% of an instantaneous temperature change)

Outer Sheath Material: Inconel, melting point 2550°F (1400°C)

Cable: 6 foot (2 meter), stainless steel overbraiding over Teflon™ insulated, stranded wires

Compression Fitting: 316 stainless steel, adjustable, 1/8 inch NPT male thread

Wiring: + = Yellow - = Red



Ordering Information

EGT-DP-072-0011-SS-N The Diesel Series 90 Degree EGT Probe

Accessories

BNG-AD-000-0000-18-0 Weld-On Bung Adapter, Female 1/8 NPT
 BNG-WO-000-0187-18-0 Spare Compression Fitting, 0.187 thru-hole
 MCT-MP-600-0000-00-K Male Mini-Spade Connector



The Sensor Connection

675 East Big Beaver Road, Suite 111
 Troy, MI 48083
 Phone: 248-417-2622
 Fax: 248-526-7001
 Email: Sales@TheSensorConnection.com
 Web: TheSensorConnection.com

Enclosed
 Ungrounded
 Tip



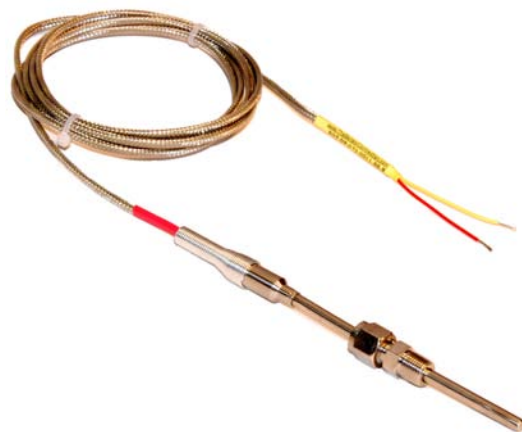
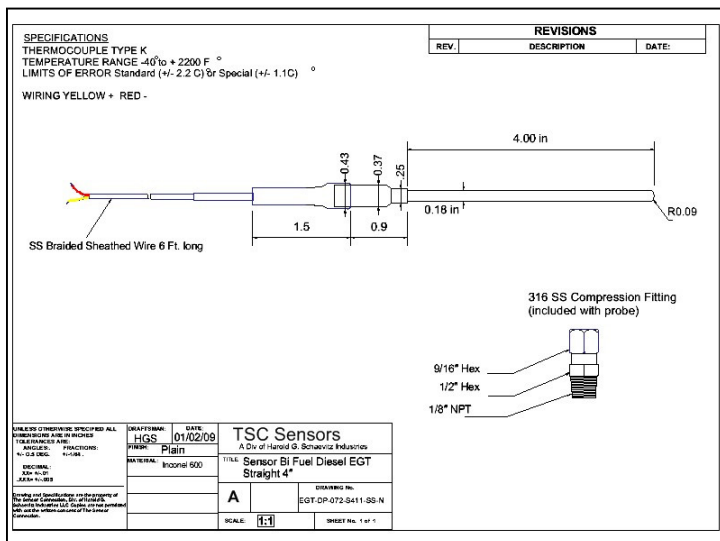
TSC Sensors - Diesel Exhaust Temperature Probe - Straight

Fast Response EGT Temperature Probe

- Type K thermocouple probe
- Enclosed sensing junction for maximum longevity
- Includes 316 SS adjustable compression fitting
- Stainless steel protected wires
- Designed for engine test & racing environments

Specifications

| | |
|------------------------|--|
| Thermocouple type: | K |
| Range: | -148 to 2372°F (-100 to 1300°C) |
| Accuracy: | +/-0.4% of reading or about +/- 1.1°C (Special Limits of Error) |
| Probe diameter: | 3/16 inch (0.187 inch) (4.75 mm) |
| Sensing Junction: | Enclosed, Ungrounded |
| Response Time: | 300 mS |
| Time Constant: | 1200 mS (Defined as the time required to reach 63.2% of an instantaneous temperature change) |
| Outer Sheath Material: | Inconel, melting point 2550°F (1400°C) |
| Cable: | 6 foot (2 meter), stainless steel overbraiding over Teflon™ insulated, stranded wires |
| Compression Fitting: | 316 stainless steel, adjustable, 1/8 inch NPT male thread |
| Wiring: | + = Yellow - = Red |



Ordering Information

EGT-DP-072-S411-SS-N The Diesel Series Straight EGT Probe

Accessories

- BNG-AD-000-0000-18-0 Weld-On Bung Adapter, Female 1/8 NPT
- BNG-WO-000-0187-18-0 Spare Compression Fitting, 0.187 thru-hole
- MCT-MP-600-0000-00-K Male Mini-Spade Connector



The Sensor Connection

675 East Big Beaver Road, Suite 111
 Troy, MI 48083
 Phone: 248-417-2622
 Fax: 248-526-7001
 Email: Sales@TheSensorConnection.com
 Web: TheSensorConnection.com

**Enclosed
 Ungrounded
 Tip**



TSC Sensors - CHT Cylinder Head Temperature Sensor - 14 mm

Fast Response CHT Temperature Sensor

- Type K thermocouple probe
- 14 mm ID
- Made in the USA
- Stainless steel protected wires
- Designed for engine test & racing environments



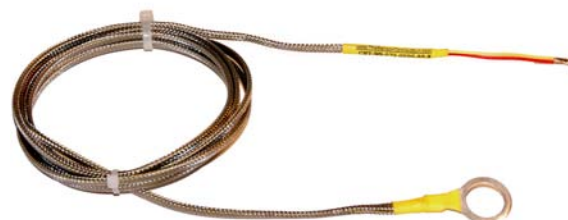
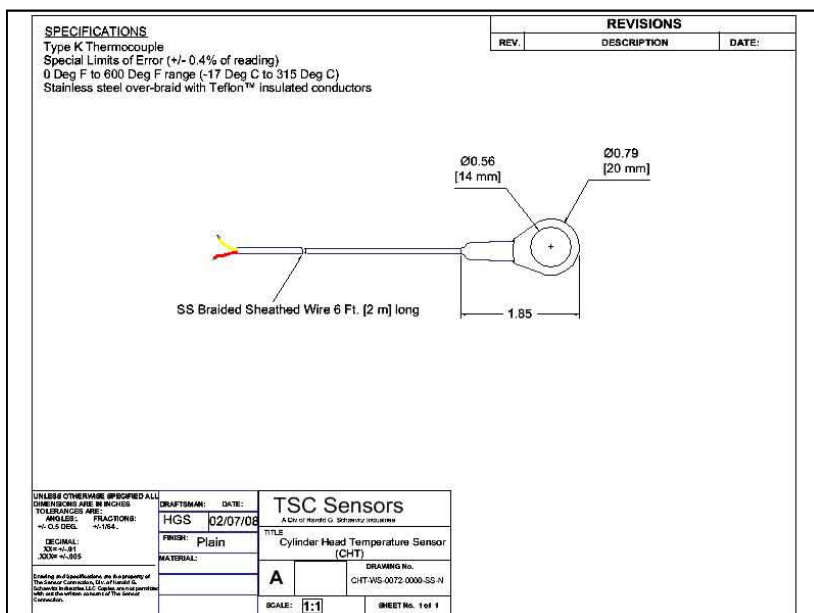
Specifications

Thermocouple type: K
 Range: 0 to 600°F (-17 to 315°C)
 Accuracy: +/-0.4% of reading or about +/- 1.1°C (Special Limits of Error)

Terminal diameter: 14 mm (0.551 inch)
 Sensing Junction: Grounded
 Response Time: 1500 mS
 Time Constant: 1000 mS (Defined as the time required to reach 63.2% of an instantaneous temperature change)

Cable: 6 foot (2 meter), stainless steel overbraiding over Teflon™ insulated, stranded wires

Wiring: + = Yellow - = Red



Ordering Information

EGT-MP-072-0000-SS-N The Exposed Series 90 Degree EGT Probe with Muffler Clamp

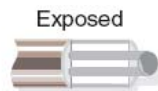
Accessories

SPARE-MflerClmp-2.5 Spare Clamp Fitting, 1.5 inch to 2.5 inch
 SPARE-MflerClmp-3.2 Spare Clamp Fitting, 2.3 inch to 3.2 inch
 MCT-MP-600-0000-00-K Male Mini-Spade Connector



The Sensor Connection

675 East Big Beaver Road, Suite 111
 Troy, MI 48083
 Phone: 248-417-2622
 Fax: 248-526-7001
 Email: Sales@TheSensorConnection.com
 Web: TheSensorConnection.com



TSC Sensors® “Super Lite”™ Series Digital Pyrometer

12 VDC Powered Miniature LED Temperature Readout/Amplifier

- Accepts type K thermocouple probe
- Visible high temperature alarm LED
- °F/°C selectable
- Screw terminal connection
- Analog retransmitting output
- Temperature Peak-Hold function

Description

This light weight type K thermocouple meter is perfect for any mobile temperature measurement application. The four digit bright red LED display is easy to read, even at a distance.

Splash-resistant front panel keypad is easy to clean & wipe down.

The meter has a user-selectable HI or LO alarm set point, configured through the front panel push buttons. During an alarm condition a front panel LED is enabled & an internal 2 Amp relay contact output is engaged.

“Super Lite” only 2.1 ounce.

Retransmit temperature reading to data logger using analog output function.

Compact package, faceplate is only 1” tall & 2” wide.

One touch button places meter display in Peak-Hold condition.

12 VDC powered. Perfect for mobile EGT monitoring. Automotive racing, trucks, motorcycles, snowmobiles, etc.



The Sensor Connection

675 East Big Beaver Road, Suite 111
Troy, MI 48083
Phone: 248-417-2622
Fax: 248-526-7001
Email: Sales@TheSensorConnection.com



Specifications

| | | |
|-----------------------|---|--------------------|
| Input type | Display Range | Accuracy: |
| K | -325 to 2372°F (-200 to 1300°C) | +/-0.2% of reading |
| Resolution: | 1°F (1°C) | |
| Display: | 4-digit LED, 0.275 inch (7 mm high) | |
| Sample Rate: | 0.25 second update rate (4 Hz) | |
| Power: | 9 to 16 VDC @ 150 mV (nominal) | |
| Dimensions: | 1 inch x 2 inch x 3 inch (24mm x 48mm x 75mm) (1/32 DIN) | |
| Weight: | 2.1 ounces | |
| Relay contact: | 115VAC @ 2 amps | |
| Analog Output: | 0-20 or 4-20 mA (0-5 or 1-5 VDC w/ included 250Ω resistor) | |
| Environment: | 0 to 50C, 85% Max. RH (non-condensing) | |

Ordering Information

PMD-RD-000-0000-PH-0 “Super Lite” Series LED Thermometer

Accessories

PMD-EB-000-0000-00-B Protective Box Enclosure, Black



The Sensor Connection
675 East Big Beaver Suite 111 Troy, MI 48083
Phone: 248-417-2622 • Fax: 248-526-7001

www.thesensorconnection.com